





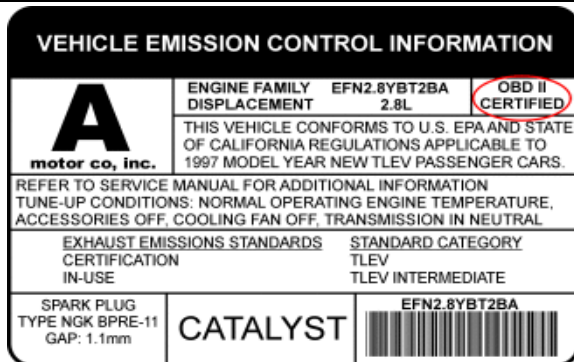
Recommended Third-Party OBD Apps

(For generic OBD II functions: check engine light diagnostics, sensor readings for standard OBD II PIDs; App Not Included)

App Name	Developer	Compatible Platform	Notes:	Price (may vary depending on the developer)
Car Scanner ELM OBDII	0vZ	iOS & Android	Compatible with a lots of hybrids & EVs and comes with a few extended PIDs for some vehicles. Please check in the App by selecting the car brand.	Mostly Free 
OBD Fusion	OCTech, LLC	iOS & Android	Comes with enhanced diagnostics on Ford, Lincoln, Mazda, Toyota, Lexus, Nissan, Infiniti, Dodge, RAM, Chrysler, Jeep, and some FIAT and Alfa Romeo vehicles.	Paid; enhanced diagnostics require separate in-app purchase 
Infocar - OBD ELM Diagnostic	Infocar Co., Ltd.	iOS & Android	A smart vehicle management app that provides vehicle diagnosis and information on driving style.	Mostly Free with in-app purchase for some premium features 
Torque Lite/Pro (OBD II & Car)	Ian Hawkins	Android only	Do NOT mix it with those apps with similar names on App Store which are not supported.	Paid 
Other OBD II Apps you can try for free	FourStroke (iOS) Piston - OBD2 Car Scanner (Android) OBD Auto Doctor scanner (iOS & Android) Obd Mary (Android)			Some premium features require a one-time purchase

FYI, vehicles since the following model year are OBD II compliant and compatible (excluding hybrid plug-in and electric vehicles):






United States	1996
Canada	1998
European Union	2001 (gas), 2004 (diesel)
Australia	2006 (gas), 2007 (diesel)
Mexico	2006
Japan	2002
Brazil	2007 (gas), 2015 (diesel)
New Zealand	2006



Note: If your vehicle does not fall into any of the above categories, look under the hood and try to locate a label that explicitly states that the vehicle was designed to comply with OBD-II legislation.

Common Advanced Third-Party Apps

(for some advanced features; App price NOT included)

App Name	Compatible Platforms	Compatible Vehicles	Special Notes	Price (see details in App Store or Play Store; May vary depending on the developer)	
BimmerCode	iOS & Android	2008+ E Series, F Series, I Series, 2008+ R Series	Not compatible with BMW/Mini Models before 2008; G series not fully supported; follow the steps in user instructions to connect.	Paid	
BimmerLink	iOS & Android	MY2008+	Not compatible with BMW/Mini Model Year before 2008	Paid	
OBD JScan	iOS & Android	Selected Jeep, Chrysler, Dodge, RAM. Check on the App for details.	iOS: select "Auto connect to Bluetooth 4.0 Low Energy" as the OBD adapter. Android: select VEEPEAK under Bluetooth OBD (2.0, 3.0) adapters as the OBD adapter	In-app purchase	
Dr. Prius	iOS & Android	2003+ Prius & Toyota/Lexus hybrid models	iOS: tap to select VEEPEAK under Bluetooth Low Energy and click "Connect OBD". Android: tap to select VEEPEAK under Bluetooth OBD to connect.	Free with in-app purchase	
Carista	iOS & Android	Selected Toyota, Nissan, Lexus, Infiniti, VW, Audi, BMW, Mini models	Select ELM32 Bluetooth (Android), or ELM32 Bluetooth LE (iOS) as the Adapter; Extra feature availability depends on the specific vehicle. Check App website for feature details.	Basic OBDII features free; requires subscription for advanced features.	

Note:

1. Also compatible with bimmer-tool (only for MY2008+), ABRP (iOS version only), Leaf Spy Pro, CVTz50, GaragePro, OBDocker, FORScan Lite (no MS-CAN support), AlfaOBD, etc.
2. Apps require separate download or purchase from Play Store or App Store. For detailed App features, please go to App website to check.
3. NOT compatible with Bluedriver, FIXD, Carly, MHD, xHP, ProTool Apps.

Advanced Diagnostic Availability (ABS, airbag, body control, A/C, TPMS, etc.)

Car brand	Required App	Supported model year	Special Notes
Ford, Lincoln & Mercury	OBD Fusion	1996 - 2022	Requires in-app purchase of advanced diagnostics add-on
	FORScan Lite	1996 - 2023	Paid; Some models from 2023 are not yet supported
Mazda	FORScan Lite	1996 - 2022	7G models may not be supported
	OBD Fusion	1996 - 2023	Requires in-app purchase of advanced diagnostics add-on
Toyota, Lexus & Scion	OBD Fusion	1996 - 2021	Requires in-app purchase of advanced diagnostics add-on
	Carista OBD	Check vehicle compatibility on the app website.	Requires an app subscription
Nissan & Infiniti	OBD Fusion	2006 - 2021	Requires in-app purchase of advanced diagnostics add-on
	Carista OBD	Check vehicle compatibility on the app website.	Requires an app subscription
Mitsubishi	OBD Fusion	2009 - 2022	Requires in-app purchase of advanced diagnostics add-on
Suzuki	SZViewer	2000+	K-Line and CAN bus based
Subaru	ActiveOBD	2012+	Premium features require an in-app purchase
BMW & Mini	BimmerLink	2008+	Paid app
	Carista OBD	2008+	Requires an app subscription
	bimmer-tool	2008+	Paid app for Android only
FCA (Jeep, Chrysler, DODGE, RAM)	OBD JScan	Check vehicle compatibility in the app	In-app purchase required
	OBD Fusion	2006 - 2023	Requires in-app purchase of advanced diagnostics add-on
Volkswagen/Audi/Seat/Skoda	Carista OBD	Check vehicle compatibility on the app website.	Requires an app subscription
Opel/Vauxhall	ScanMyOpel, ScanMyOpel CAN	Check vehicle compatibility on the app website.	In-app purchase required

Additional notes:

1. Modules in MS-CAN are not supported (For Ford vehicles);
2. BMW and Mini model year before 2008 are not supported for advanced diagnostics;
3. For FCA vehicles equipped with secure gateway (around 2017 or 2018+), an additional adapter is required to clear advanced codes. Please refer to the app page for more information.
4. No specially developed third-party apps with advanced diagnostics for Mercedes-Benz/Smart, GM group, Hyundai/Kia, Honda/Acura, Porsche, Renault, etc. so far.
5. Vehicles from recent years may not have been supported for advanced diagnostics. Please go to the app website to check.
6. **App Not Included**; pricing information may change depending on the developer.
7. The list will be updated from time to time when new brands or models are supported. You can contact Veepeak customer service to check if your vehicle is not listed.